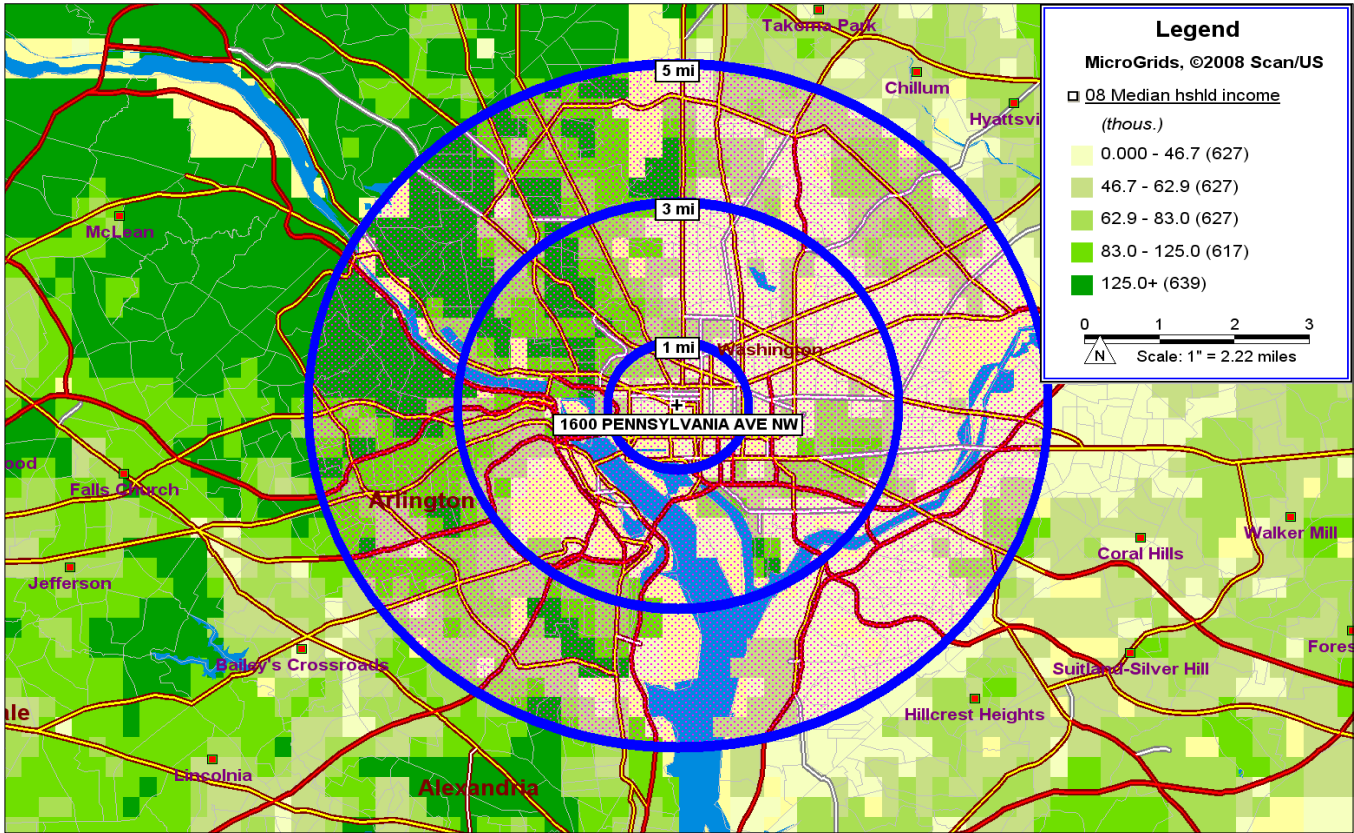


# MapFacts© Demographic Summary: 2010

SCAN/US SAMPLE REPORTS 2010  
 1600 PENNSYLVANIA AVE NW: WASHINGTON,DC 20502/5 Mi Ring

Scan/US, Inc.  
 05/12/2009



<b>Population</b>	<b>670,816</b>		<b>Households</b>	<b>287,817</b>
In Group Quarters	37,019	5.5%	Average Household Size	2.2
<b>Race:</b> White	305,043	45.5%	<b>Family Households</b>	117,920
Black	273,326	40.7%	Average Family Size	3.5
American Indian	1,957	0.3%	<b>Non-Family Households</b>	169,897
Asian	34,068	5.1%	Average Non-Fam HH Size	1.3
Pacific Islander	684	0.1%	<b>Households by Income</b>	
Other/Multi-Racial	55,737	8.3%	\$0 - \$24,999	65,617
<b>Hispanic Origin</b>	77,762	11.6%	\$25,000 - \$49,999	64,703
<b>Sex:</b> Male	323,713	48.3%	\$50,000 - \$74,999	47,267
Female	347,097	51.7%	\$75,000 - \$99,999	31,788
			\$100,000 +	78,438
<b>Age:</b> < 10 Years	74,007	11.0%	<b>Average HH Income</b>	\$99,761
10 - 14 Years	32,035	4.8%	<b>Median HH Income</b>	\$63,503
15 - 19 Years	37,514	5.6%	<b>Per Capita Income</b>	\$44,413
20 - 24 Years	50,781	7.6%	<b>Vehicles Available</b>	296,500
25 - 34 Years	123,734	18.4%	Average Vehicles/HH	1.0
35 - 44 Years	110,213	16.4%	<b>Total Housing Units</b>	325,988
45 - 54 Years	90,351	13.5%	Owner Occupied	137,890
55 - 64 Years	72,284	10.8%	Renter Occupied	149,927
65 - 74 Years	41,138	6.1%	Vacant	38,171
75 - 84 Years	25,871	3.9%		
85+ Years	12,880	1.9%		
<b>Median Age</b>	37.0			

# Detailed Demographic Update: 2010/2015

SCAN/US SAMPLE REPORTS 2010

1600 PENNSYLVANIA AVE NW: WASHINGTON,DC 20502/5 Mi Ring

Scan/US, Inc.

05/12/2009

	2010 Estimates		2015 Projections		2010-2015 Change	
<b>Population</b>	<b>670,816</b>		<b>687,199</b>		<b>16,383</b>	
In Households	633,797	94.5%	650,383	94.6%	16,586	0.2%
In Families	412,986	61.6%	432,689	63.0%	19,703	1.4%
In Non-families	220,811	32.9%	217,694	31.7%	-3,116	-1.2%
In Group Quarters	37,019	5.5%	36,816	5.4%	-203	-0.2%
<b>Population By Race</b>						
White	305,043	45.5%	330,005	48.0%	24,962	2.5%
Black	273,326	40.7%	259,609	37.8%	-13,717	-3.0%
American Indian	1,957	0.3%	1,964	0.3%	7	0.0%
Asian	34,068	5.1%	38,279	5.6%	4,210	0.5%
Pacific Islander	684	0.1%	831	0.1%	148	0.0%
Other/Multi-Racial	55,737	8.3%	56,511	8.2%	774	-0.1%
<b>Hispanic Population</b>	<b>77,762</b>	<b>11.6%</b>	<b>78,299</b>	<b>11.4%</b>	<b>537</b>	<b>-0.2%</b>
<b>Households</b>	<b>287,817</b>		<b>288,472</b>		<b>655</b>	
Average HH Size	2.2		2.3		0.1	
<b>Family Households</b>	<b>117,920</b>	<b>41.0%</b>	<b>113,830</b>	<b>39.5%</b>	<b>-4,090</b>	<b>-1.5%</b>
With Children	54,958	19.1%	50,803	17.6%	-4,155	-1.5%
Average Family Size	3.5		3.8			
<b>Non-Family Households</b>	<b>169,897</b>	<b>59.0%</b>	<b>174,643</b>	<b>60.5%</b>	<b>4,745</b>	<b>1.5%</b>
With Children	639	0.2%	580	0.2%	-59	0.0%
Average Non-family Size	1.3		1.2		-0.1	
<b>Households By Count Of Persons</b>						
1	143,387	49.8%	151,501	52.5%	8,114	2.7%
2	58,968	20.5%	45,472	15.8%	-13,496	-4.7%
3 - 4	56,671	19.7%	57,575	20.0%	905	0.3%
5+	28,789	10.0%	33,923	11.8%	5,134	1.8%
<b>Households By Count Of Vehicles</b>						
0	85,748	29.8%	82,935	28.7%	-2,812	-1.0%
1	129,356	44.9%	127,931	44.3%	-1,425	-0.6%
2	57,302	19.9%	60,685	21.0%	3,384	1.1%
3+	15,409	5.4%	16,919	5.9%	1,510	0.5%
<b>Total Vehicles Available</b>	<b>296,500</b>		<b>307,088</b>		<b>10,588</b>	
Average Vehicles/Household	1.0		1.1		0.0	
<b>Total Housing Units</b>	<b>325,988</b>		<b>334,662</b>		<b>8,674</b>	
Vacant	38,171	11.7%	46,190	13.8%	8,019	2.1%
Owned	137,890	42.3%	151,893	45.4%	14,004	3.1%
Rented	149,927	46.0%	136,579	40.8%	-13,348	-5.2%

# Detailed Demographic Update: 2010/2015

SCAN/US SAMPLE REPORTS 2010

1600 PENNSYLVANIA AVE NW: WASHINGTON,DC 20502/5 Mi Ring

Scan/US, Inc.

05/12/2009

	2010 Estimates		2015 Projections		2010-2015 Change	
<b>Total Population</b>	<b>670,816</b>		<b>687,199</b>		<b>16,383</b>	
< 5 Years	39,908	5.9%	43,101	6.3%	3,193	0.3%
5 - 9 Years	34,098	5.1%	38,994	5.8%	4,896	0.7%
10 - 14 Years	32,035	4.8%	34,212	5.1%	2,177	0.3%
15 - 19 Years	37,514	5.6%	34,351	5.1%	-3,163	-0.5%
20 - 24 Years	50,781	7.6%	39,630	5.9%	-11,152	-1.7%
25 - 34 Years	123,734	18.4%	110,088	16.4%	-13,645	-2.0%
35 - 44 Years	110,213	16.4%	117,127	17.5%	6,913	1.0%
45 - 54 Years	90,351	13.5%	98,508	14.7%	8,157	1.2%
55 - 64 Years	72,284	10.8%	80,494	12.0%	8,210	1.2%
65 - 74 Years	41,138	6.1%	51,831	7.7%	10,693	1.6%
75 - 84 Years	25,871	3.9%	26,588	4.0%	717	0.1%
85+ Years	12,880	1.9%	12,266	1.8%	-614	-0.1%
<b>Median Age</b>	<b>37.0</b>		<b>38.7</b>		<b>1.7</b>	
<b>Males</b>	<b>323,713</b>	<b>48.3%</b>	<b>331,196</b>	<b>48.2%</b>	<b>7,483</b>	<b>-0.1%</b>
< 5 Years	20,532	6.3%	22,129	6.7%	1,597	0.2%
5 - 9 Years	17,048	5.3%	19,756	6.0%	2,708	0.4%
10 - 14 Years	16,532	5.1%	17,077	5.2%	544	0.1%
15 - 19 Years	18,978	5.9%	17,591	5.3%	-1,387	-0.2%
20 - 24 Years	23,751	7.3%	20,011	6.0%	-3,740	-0.6%
25 - 34 Years	59,741	18.5%	51,334	15.5%	-8,407	-1.3%
35 - 44 Years	55,997	17.3%	58,013	17.5%	2,017	0.3%
45 - 54 Years	45,501	14.1%	49,903	15.1%	4,402	0.7%
55 - 64 Years	33,886	10.5%	38,352	11.6%	4,466	0.7%
65 - 74 Years	18,237	5.6%	23,037	7.0%	4,800	0.7%
75 - 84 Years	9,879	3.1%	10,396	3.1%	517	0.1%
85+ Years	3,629	1.1%	3,594	1.1%	-36	0.0%
<b>Male Median Age</b>	<b>36.1</b>		<b>37.9</b>		<b>1.8</b>	
<b>Females</b>	<b>347,097</b>	<b>51.7%</b>	<b>355,998</b>	<b>51.8%</b>	<b>8,900</b>	<b>0.1%</b>
< 5 Years	19,376	5.6%	20,972	5.9%	1,596	0.3%
5 - 9 Years	17,050	4.9%	19,238	5.4%	2,188	0.5%
10 - 14 Years	15,503	4.5%	17,135	4.8%	1,633	0.3%
15 - 19 Years	18,536	5.3%	16,760	4.7%	-1,776	-0.6%
20 - 24 Years	27,030	7.8%	19,618	5.5%	-7,412	-2.3%
25 - 34 Years	63,993	18.4%	58,754	16.5%	-5,239	-1.9%
35 - 44 Years	54,217	15.6%	59,113	16.6%	4,897	1.0%
45 - 54 Years	44,850	12.9%	48,605	13.7%	3,755	0.7%
55 - 64 Years	38,398	11.1%	42,142	11.8%	3,744	0.8%
65 - 74 Years	22,901	6.6%	28,794	8.1%	5,893	1.5%
75 - 84 Years	15,992	4.6%	16,192	4.5%	200	-0.1%
85+ Years	9,251	2.9%	8,673	2.4%	-578	-0.4%
<b>Female Median Age</b>	<b>37.9</b>		<b>39.6</b>		<b>1.6</b>	

# Detailed Demographic Update: 2010/2015

SCAN/US SAMPLE REPORTS 2010

1600 PENNSYLVANIA AVE NW: WASHINGTON,DC 20502/5 Mi Ring

Scan/US, Inc.

05/12/2009

	2010 Estimates		2015 Projections		2010-2015 Change	
<b>Aggregate Total Income (\$M)</b>	<b>\$29,793.1</b>		<b>\$35,873.0</b>		<b>\$6,079.9</b>	
<b>Per Capita Total Income</b>	<b>\$44,413</b>		<b>\$52,202</b>		<b>\$7,789</b>	
<hr/>						
<b>Total Households</b>	<b>287,817</b>		<b>288,472</b>		<b>655</b>	
< \$10,000	31,490	10.9%	29,910	10.4%	-1,580	-0.6%
\$10,000 - \$14,999	10,818	3.8%	10,206	3.5%	-611	-0.2%
\$15,000 - \$19,999	11,658	4.1%	10,931	3.8%	-727	-0.3%
\$20,000 - \$24,999	11,652	4.0%	9,127	3.2%	-2,525	-0.9%
\$25,000 - \$29,999	12,047	4.2%	10,886	3.8%	-1,161	-0.4%
\$30,000 - \$34,999	13,886	4.8%	11,856	4.1%	-2,030	-0.7%
\$35,000 - \$39,999	12,893	4.5%	12,334	4.3%	-560	-0.2%
\$40,000 - \$49,999	25,876	9.0%	23,321	8.1%	-2,555	-0.9%
\$50,000 - \$59,999	20,826	7.2%	23,938	8.3%	3,113	1.1%
\$60,000 - \$74,999	26,442	9.2%	22,933	7.9%	-3,509	-1.2%
\$75,000 - \$99,999	31,788	11.0%	32,390	11.2%	602	0.2%
\$100,000 - \$124,999	22,331	7.8%	22,558	7.8%	227	0.1%
\$125,000 - \$149,999	14,940	5.2%	17,363	6.0%	2,423	0.8%
\$150,000 - \$199,999	16,430	5.7%	19,626	6.8%	3,196	1.1%
\$200,000 - \$249,999	7,204	2.5%	9,567	3.3%	2,362	0.8%
\$250,000+	17,533	6.1%	21,523	7.5%	3,990	1.4%
<hr/>						
<b>Aggregate HH Income (\$M)</b>	<b>\$28,713.0</b>		<b>\$34,618.5</b>		<b>\$5,905.4</b>	
<b>Average HH Income</b>	<b>\$99,761</b>		<b>\$120,006</b>		<b>\$20,245</b>	
<b>Median HH Income</b>	<b>\$63,503</b>		<b>\$70,558</b>		<b>\$7,055</b>	
<hr/>						
<b>Disposable Income</b>						
< \$10,000	33,402	11.6%	31,707	11.0%	-1,695	-0.6%
\$10,000 - \$14,999	10,496	3.6%	9,861	3.4%	-634	-0.2%
\$15,000 - \$19,999	13,144	4.6%	11,902	4.1%	-1,241	-0.4%
\$20,000 - \$24,999	14,530	5.0%	12,078	4.2%	-2,452	-0.9%
\$25,000 - \$29,999	16,742	5.8%	14,554	5.0%	-2,188	-0.8%
\$30,000 - \$34,999	16,360	5.7%	15,329	5.3%	-1,031	-0.4%
\$35,000 - \$39,999	17,079	5.9%	15,352	5.3%	-1,727	-0.6%
\$40,000 - \$49,999	30,182	10.5%	32,272	11.2%	2,090	0.7%
\$50,000 - \$59,999	24,398	8.5%	21,220	7.4%	-3,179	-1.1%
\$60,000 - \$74,999	29,899	10.4%	30,186	10.5%	287	0.1%
\$75,000 - \$99,999	28,738	10.0%	29,496	10.2%	758	0.2%
\$100,000 - \$124,999	16,900	5.9%	19,824	6.9%	2,924	1.0%
\$125,000 - \$149,999	10,549	3.7%	12,770	4.4%	2,221	0.8%
\$150,000 - \$199,999	9,585	3.3%	12,662	4.4%	3,077	1.1%
\$200,000 - \$249,999	4,287	1.5%	5,481	1.9%	1,194	0.4%
\$250,000+	11,523	4.0%	13,776	4.8%	2,253	0.8%
<hr/>						
<b>Aggregate Disposable Income (\$M)</b>	<b>\$23,584.9</b>		<b>\$27,925.8</b>		<b>\$4,340.9</b>	
<b>Average Disposable Income</b>	<b>\$81,944</b>		<b>\$96,806</b>		<b>\$14,862</b>	
<b>Median Disposable Income</b>	<b>\$51,903</b>		<b>\$57,164</b>		<b>\$5,261</b>	

# Detailed Demographic Update: 2010/2015

SCAN/US SAMPLE REPORTS 2010  
1600 PENNSYLVANIA AVE NW: WASHINGTON,DC 20502/5 Mi Ring

Scan/US, Inc.  
05/12/2009

	2010 Estimates		2015 Projections		2010-2015 Change	
<b>Total Households</b>	<b>287,817</b>		<b>288,472</b>		<b>655</b>	
<b>Households By Race of Householder</b>						
White	147,637	51.3%	152,885	53.0%	5,248	1.7%
Black	108,557	37.7%	103,119	35.7%	-5,439	-2.0%
American Indian	768	0.3%	759	0.3%	-9	0.0%
Asian	14,005	4.9%	15,159	5.3%	1,154	0.4%
Pacific Islander	209	0.1%	230	0.1%	21	0.0%
Other/Multi-Racial	16,641	5.8%	16,321	5.7%	-321	-0.1%
<b>HHs, Hispanic Head of HH</b>	<b>23,152</b>	<b>8.0%</b>	<b>23,387</b>	<b>8.1%</b>	<b>235</b>	<b>0.1%</b>
<b>Households By Age of Householder</b>						
<25 Years	17,229	6.0%	14,125	4.9%	-3,104	-1.1%
25 - 34 Years	62,464	21.7%	54,009	18.7%	-8,455	-3.0%
35 - 44 Years	59,460	20.7%	60,973	21.1%	1,512	0.5%
45 - 54 Years	52,047	18.1%	54,614	18.9%	2,567	0.8%
55 - 64 Years	44,557	15.5%	47,791	16.6%	3,233	1.1%
65 - 74 Years	26,757	9.3%	32,429	11.2%	5,672	1.9%
75 - 84 Years	17,399	6.0%	17,266	6.0%	-133	-0.1%
85+ Years	7,900	2.7%	7,263	2.5%	-637	-0.2%
<b>Households By Count Of Persons</b>						
1	143,388	49.8%	151,450	52.5%	8,062	2.7%
2	58,948	20.5%	45,493	15.8%	-13,455	-4.7%
3	25,212	8.8%	19,641	6.8%	-5,571	-2.0%
4	31,431	10.9%	37,894	13.1%	6,462	2.2%
5	15,491	5.4%	18,410	6.4%	2,919	1.0%
6	7,073	2.5%	8,286	2.9%	1,213	0.4%
7+	6,269	2.2%	7,297	2.5%	1,027	0.4%
<hr/>						
<b>Family Households</b>	<b>117,920</b>	<b>41.0%</b>	<b>113,830</b>	<b>39.5%</b>	<b>-4,090</b>	<b>-1.5%</b>
<b>Families By Structure</b>						
Married Couples, Kids	25,782	21.9%	23,574	20.7%	-2,208	-1.2%
Male H of H, No Wife, Kids	4,509	3.8%	4,219	3.7%	-290	-0.1%
Female H of H, No Husb, Kids	24,666	20.9%	23,004	20.2%	-1,663	-0.7%
Married Couples, No Kids	43,714	37.1%	44,606	39.2%	892	2.1%
Male H of H, No Wife, No Kids	5,799	4.9%	5,644	5.0%	-155	0.0%
Female H of H, No Husb, No Kids	13,448	11.4%	12,780	11.2%	-667	-0.2%
<hr/>						
<b>Non-Family Households</b>	<b>169,897</b>	<b>59.0%</b>	<b>174,643</b>	<b>60.5%</b>	<b>4,745</b>	<b>1.5%</b>
<b>Non-Families By Structure</b>						
1 Person, Male	65,734	38.7%	69,703	39.9%	3,969	1.2%
1 Person, Female	77,710	45.7%	81,821	46.9%	4,111	1.1%

# Detailed Demographic Update: 2010/2015

SCAN/US SAMPLE REPORTS 2010

1600 PENNSYLVANIA AVE NW: WASHINGTON,DC 20502/5 Mi Ring

Scan/US, Inc.

05/12/2009

	2010 Estimates		2015 Projections		2010-2015 Change	
<b>Family Households</b>	<b>117,920</b>		<b>113,830</b>		<b>-4,090</b>	
<b>Family Income</b>						
< \$10,000	8,766	7.4%	7,045	6.2%	-1,721	-1.2%
\$10,000 - \$14,999	4,686	4.0%	4,920	4.3%	234	0.3%
\$15,000 - \$19,999	4,201	3.6%	3,681	3.2%	-521	-0.3%
\$20,000 - \$24,999	5,134	4.4%	4,240	3.7%	-893	-0.6%
\$25,000 - \$29,999	4,631	3.9%	4,223	3.7%	-408	-0.2%
\$30,000 - \$34,999	5,864	5.0%	5,424	4.8%	-440	-0.2%
\$35,000 - \$39,999	5,176	4.4%	5,096	4.5%	-80	0.1%
\$40,000 - \$49,999	8,885	7.5%	7,133	6.3%	-1,752	-1.3%
\$50,000 - \$59,999	7,297	6.2%	8,002	7.0%	704	0.8%
\$60,000 - \$74,999	8,754	7.4%	6,675	5.9%	-2,079	-1.6%
\$75,000 - \$99,999	11,580	9.8%	9,985	8.8%	-1,595	-1.0%
\$100,000 - \$124,999	8,788	7.5%	7,628	6.7%	-1,160	-0.8%
\$125,000 - \$149,999	6,972	5.9%	7,315	6.4%	343	0.5%
\$150,000 - \$199,999	9,812	8.3%	11,226	9.9%	1,414	1.5%
\$200,000 - \$249,999	4,587	3.9%	5,912	5.2%	1,324	1.3%
\$250,000+	12,783	10.8%	15,322	13.5%	2,539	2.6%
<b>Aggregate Family Income (\$M)</b>	<b>\$15,307.1</b>		<b>\$18,528.6</b>		<b>\$3,221.5</b>	
<b>Average Family Income</b>	<b>\$129,809</b>		<b>\$162,775</b>		<b>\$32,965</b>	
<b>Median Family Income</b>	<b>\$85,183</b>		<b>\$96,638</b>		<b>\$11,455</b>	
<b>Non-Family Households</b>	<b>169,897</b>		<b>174,643</b>		<b>4,745</b>	
<b>Non-Family Income</b>						
< \$10,000	22,711	13.4%	22,794	13.1%	83	-0.3%
\$10,000 - \$14,999	6,148	3.6%	5,257	3.0%	-892	-0.6%
\$15,000 - \$19,999	7,480	4.4%	7,248	4.2%	-232	-0.3%
\$20,000 - \$24,999	6,543	3.9%	4,909	2.8%	-1,634	-1.0%
\$25,000 - \$29,999	7,469	4.4%	6,707	3.8%	-762	-0.6%
\$30,000 - \$34,999	8,066	4.7%	6,483	3.7%	-1,583	-1.0%
\$35,000 - \$39,999	7,739	4.6%	7,272	4.2%	-466	-0.4%
\$40,000 - \$49,999	16,921	10.0%	16,146	9.2%	-775	-0.7%
\$50,000 - \$59,999	13,591	8.0%	15,892	9.1%	2,301	1.1%
\$60,000 - \$74,999	17,630	10.4%	16,284	9.3%	-1,345	-1.1%
\$75,000 - \$99,999	20,106	11.8%	22,397	12.8%	2,291	1.0%
\$100,000 - \$124,999	13,533	8.0%	14,932	8.6%	1,399	0.6%
\$125,000 - \$149,999	7,973	4.7%	10,135	5.8%	2,163	1.1%
\$150,000 - \$199,999	6,632	3.9%	8,366	4.8%	1,733	0.9%
\$200,000 - \$249,999	2,629	1.5%	3,676	2.1%	1,047	0.6%
\$250,000+	4,716	2.8%	6,135	3.5%	1,419	0.7%
<b>Aggregate Non-Family Income (\$M)</b>	<b>\$13,406.0</b>		<b>\$16,088.3</b>		<b>\$2,682.4</b>	
<b>Average Non-Family Income</b>	<b>\$78,906</b>		<b>\$92,122</b>		<b>\$13,215</b>	
<b>Median Non-Family Income</b>	<b>\$53,970</b>		<b>\$59,897</b>		<b>\$5,927</b>	

# Detailed Demographic Update: 2010/2015

SCAN/US SAMPLE REPORTS 2010  
1600 PENNSYLVANIA AVE NW: WASHINGTON,DC 20502/5 Mi Ring

Scan/US, Inc.  
05/12/2009

	2010 Estimates		2015 Projections		2010-2015 Change	
<b>Total Households</b>	<b>287,817</b>		<b>288,472</b>		<b>655</b>	
<b>Owner-Occupied Households</b>	<b>137,882</b>	<b>47.9%</b>	<b>151,890</b>	<b>52.7%</b>	<b>14,009</b>	<b>4.7%</b>
0 Vehicles	18,075	13.1%	18,638	12.3%	564	-0.8%
1 Vehicle	64,851	47.0%	70,726	46.6%	5,875	-0.5%
2 Vehicles	42,789	31.0%	48,515	31.9%	5,725	0.9%
3 Vehicles	9,008	6.5%	9,806	6.5%	799	-0.1%
4 Vehicles	2,690	2.0%	3,764	2.5%	1,074	0.5%
5+ Vehicles	469	0.3%	441	0.3%	-28	0.0%
<b>Autos Available (Owner HHs)</b>	<b>191,012</b>		<b>214,921</b>		<b>23,909</b>	
<b>Average Autos (Owner HHs)</b>	<b>1.4</b>		<b>1.4</b>		<b>0.0</b>	
<b>Renter-Occupied Households</b>	<b>149,910</b>	<b>52.1%</b>	<b>136,578</b>	<b>47.3%</b>	<b>-13,332</b>	<b>#REF!</b>
0 Vehicles	67,607	45.1%	64,265	47.1%	-3,342	2.0%
1 Vehicle	64,550	43.1%	57,250	41.9%	-7,300	-1.1%
2 Vehicles	14,557	9.7%	12,231	9.0%	-2,326	-0.8%
3 Vehicles	1,885	1.3%	1,545	1.1%	-340	-0.1%
4 Vehicles	830	0.6%	918	0.7%	88	0.1%
5+ Vehicles	482	0.3%	369	0.3%	-112	-0.1%
<b>Autos Available (Renter HHs)</b>	<b>105,542</b>		<b>92,443</b>		<b>-13,099</b>	
<b>Average Autos (Renter HHs)</b>	<b>0.7</b>		<b>0.7</b>		<b>0.0</b>	
<hr/>						
<b>Total Population</b>	<b>670,815.75</b>		<b>687,199</b>		<b>16,383</b>	
<b>Population, 25+ Years</b>	<b>475,769</b>	<b>70.9%</b>	<b>496,902</b>	<b>72.3%</b>	<b>21,133</b>	<b>1.4%</b>
No HS Diploma	56,354	11.8%	43,234	8.7%	-13,120	-3.1%
HS Graduate	83,099	17.5%	85,487	17.2%	2,388	-0.3%
College, No Degree	57,458	12.1%	52,786	10.6%	-4,672	-1.5%
Associate Degree	19,203	4.0%	22,908	4.6%	3,706	0.6%
College Degree	119,253	25.1%	132,546	26.7%	13,293	1.6%
Graduate/Professional Degree	140,403	29.5%	159,941	32.2%	19,538	2.7%
<hr/>						
<b>Males, 16+ Years</b>	<b>262,464</b>	<b>39.1%</b>	<b>267,996</b>	<b>39.0%</b>	<b>5,532</b>	<b>-0.1%</b>
In Armed Forces	5,221	2.0%	5,395	2.0%	174	0.0%
Employed	177,441	67.6%	180,710	67.4%	3,269	-0.2%
Unemployed	13,278	5.1%	13,563	5.1%	285	0.0%
Not In Labor Force	66,525	25.3%	68,329	25.5%	1,804	0.1%
<b>Females, 16+ Years</b>	<b>288,282</b>	<b>43.0%</b>	<b>294,727</b>	<b>42.9%</b>	<b>6,445</b>	<b>-0.1%</b>
In Armed Forces	1,596	0.6%	1,645	0.6%	50	0.0%
Employed	174,836	60.6%	178,407	60.5%	3,571	-0.1%
Unemployed	12,074	4.2%	12,330	4.2%	256	0.0%
Not In Labor Force	99,776	34.6%	102,345	34.7%	2,569	0.1%

# Demographic Update: 2010/2015

SCAN/US SAMPLE REPORTS 2010

1600 PENNSYLVANIA AVE NW: WASHINGTON,DC 20502/5 Mi Ring

Scan/US, Inc.

05/12/2009

	2010 Estimates		2015 Projections		2010-2015 Change	
<b>Population</b>	<b>670,816</b>		<b>687,199</b>		<b>16,383</b>	
In Households	633,797	94.5%	650,383	94.6%	16,586	0.2%
In Families	412,986	61.6%	432,689	63.0%	19,703	1.4%
In Non-families	220,811	32.9%	217,694	31.7%	-3,116	-1.2%
In Group Quarters	37,019	5.5%	36,816	5.4%	-203	-0.2%
<b>Population By Race</b>						
White	305,043	45.5%	330,005	48.0%	24,962	2.5%
Black	273,326	40.7%	259,609	37.8%	-13,717	-3.0%
American Indian	1,957	0.3%	1,964	0.3%	7	0.0%
Asian	34,068	5.1%	38,279	5.6%	4,210	0.5%
Pacific Islander	684	0.1%	831	0.1%	148	0.0%
Other/Multi-Racial	55,737	8.3%	56,511	8.2%	774	-0.1%
<b>Hispanic Population</b>	<b>77,762</b>	<b>11.6%</b>	<b>78,299</b>	<b>11.4%</b>	<b>537</b>	<b>-0.2%</b>
<b>Households</b>	<b>287,817</b>		<b>288,472</b>		<b>655</b>	
Average HH Size	2.2		2.3		0.1	
<b>Family Households</b>	<b>117,920</b>	<b>41.0%</b>	<b>113,830</b>	<b>39.5%</b>	<b>-4,090</b>	<b>-1.5%</b>
With Children	54,958	19.1%	50,803	17.6%	-4,155	-1.5%
Average Family Size	3.5		3.8			
<b>Non-Family Households</b>	<b>169,897</b>	<b>59.0%</b>	<b>174,643</b>	<b>60.5%</b>	<b>4,745</b>	<b>1.5%</b>
With Children	639	0.2%	580	0.2%	-59	-0.2%
Average Non-family Size	1.3		1.2		-0.1	
<b>Households By Count Of Persons</b>						
1	143,387	49.8%	151,501	52.5%	8,114	2.7%
2	58,968	20.5%	45,472	15.8%	-13,496	-20.5%
3 - 4	56,671	19.7%	57,575	20.0%	905	-19.7%
5+	28,789	10.0%	33,923	11.8%	5,134	-10.0%
<b>Households By Count Of Vehicles</b>						
0	85,748	29.8%	82,935	28.7%	-2,812	-1.0%
1	129,356	44.9%	127,931	44.3%	-1,425	-0.6%
2	57,302	19.9%	60,685	21.0%	3,384	1.1%
3+	15,409	5.4%	16,919	5.9%	1,510	0.5%
<b>Total Vehicles Available</b>	<b>296,500</b>		<b>307,088</b>		<b>10,588</b>	
Average Vehicles/Household	1.0		1.1		0.0	
<b>Total Housing Units</b>	<b>325,988</b>		<b>334,662</b>		<b>8,674</b>	
Vacant	38,171	11.7%	46,190	13.8%	8,019	2.1%
Owned	137,890	42.3%	151,893	45.4%	14,004	3.1%
Rented	149,927	46.0%	136,579	40.8%	-13,348	-5.2%

# Demographic Update: 2010/2015

SCAN/US SAMPLE REPORTS 2010

1600 PENNSYLVANIA AVE NW: WASHINGTON,DC 20502/5 Mi Ring

Scan/US, Inc.

05/12/2009

	2010 Estimates		2015 Projections		2010-2015 Change	
<b>Total Population</b>	<b>670,816</b>		<b>687,199</b>		<b>16,383</b>	
< 5 Years	39,908	5.9%	43,101	6.3%	3,193	0.3%
5 - 9 Years	34,098	5.1%	38,994	5.7%	4,896	0.6%
10 - 14 Years	32,035	4.8%	34,212	5.0%	2,177	0.2%
15 - 19 Years	37,514	5.6%	34,351	5.0%	-3,163	-0.6%
20 - 24 Years	50,781	7.6%	39,630	5.8%	-11,152	-1.8%
25 - 34 Years	123,734	18.4%	110,088	16.0%	-13,645	-2.4%
35 - 44 Years	110,213	16.4%	117,127	17.0%	6,913	0.6%
45 - 54 Years	90,351	13.5%	98,508	14.3%	8,157	0.9%
55 - 64 Years	72,284	10.8%	80,494	11.7%	8,210	0.9%
65 - 74 Years	41,138	6.1%	51,831	7.5%	10,693	1.4%
75 - 84 Years	25,871	3.9%	26,588	3.9%	717	0.0%
85+ Years	12,880	1.9%	12,266	1.8%	-614	-0.1%
<b>Median Age</b>	<b>37.0</b>		<b>38.7</b>		<b>1.7</b>	
<b>Males</b>	<b>323,713</b>	<b>48.3%</b>	<b>331,196</b>	<b>48.2%</b>	<b>7,483</b>	<b>-0.1%</b>
< 5 Years	20,532	6.3%	22,129	6.7%	1,597	0.2%
5 - 9 Years	17,048	5.3%	19,756	6.0%	2,708	0.4%
10 - 14 Years	16,532	5.1%	17,077	5.2%	544	0.1%
15 - 19 Years	18,978	5.9%	17,591	5.3%	-1,387	-0.2%
20 - 24 Years	23,751	7.3%	20,011	6.0%	-3,740	-0.6%
25 - 34 Years	59,741	18.5%	51,334	15.5%	-8,407	-1.3%
35 - 44 Years	55,997	17.3%	58,013	17.5%	2,017	0.3%
45 - 54 Years	45,501	14.1%	49,903	15.1%	4,402	0.7%
55 - 64 Years	33,886	10.5%	38,352	11.6%	4,466	0.7%
65 - 74 Years	18,237	5.6%	23,037	7.0%	4,800	0.7%
75 - 84 Years	9,879	3.1%	10,396	3.1%	517	0.1%
85+ Years	3,629	1.1%	3,594	1.1%	-36	0.0%
<b>Male Median Age</b>	<b>36.1</b>		<b>37.9</b>		<b>1.8</b>	
<b>Females</b>	<b>347,097</b>	<b>51.7%</b>	<b>355,998</b>	<b>51.8%</b>	<b>8,900</b>	<b>0.1%</b>
< 5 Years	19,376	5.6%	20,972	5.9%	1,596	0.3%
5 - 9 Years	17,050	4.9%	19,238	5.4%	2,188	0.5%
10 - 14 Years	15,503	4.5%	17,135	4.8%	1,633	0.3%
15 - 19 Years	18,536	5.3%	16,760	4.7%	-1,776	-0.6%
20 - 24 Years	27,030	7.8%	19,618	5.5%	-7,412	-2.3%
25 - 34 Years	63,993	18.4%	58,754	16.5%	-5,239	-1.9%
35 - 44 Years	54,217	15.6%	59,113	16.6%	4,897	1.0%
45 - 54 Years	44,850	12.9%	48,605	13.7%	3,755	0.7%
55 - 64 Years	38,398	11.1%	42,142	11.8%	3,744	0.8%
65 - 74 Years	22,901	6.6%	28,794	8.1%	5,893	1.5%
75 - 84 Years	15,992	4.6%	16,192	4.5%	200	-0.1%
85+ Years	9,251	2.7%	8,673	2.4%	-578	-0.2%
<b>Female Median Age</b>	<b>37.9</b>		<b>39.6</b>		<b>1.6</b>	

# Demographic Update: 2010/2015

SCAN/US SAMPLE REPORTS 2010

1600 PENNSYLVANIA AVE NW: WASHINGTON,DC 20502/5 Mi Ring

Scan/US, Inc.

05/12/2009

	2010 Estimates		2015 Projections		2010-2015 Change	
<b>Aggregate Total Income (\$M)</b>	<b>\$29,793.1</b>		<b>\$35,873.0</b>		<b>\$6,079.9</b>	
<b>Per Capita Total Income</b>	<b>\$44,413</b>		<b>\$52,202</b>		<b>\$7,789</b>	
<hr/>						
<b>Total Households</b>	<b>287,817</b>		<b>288,472</b>		<b>655</b>	
< \$10,000	31,490	10.9%	29,910	10.4%	-1,580	-0.6%
\$10,000 - \$14,999	10,818	3.8%	10,206	3.5%	-611	-0.2%
\$15,000 - \$19,999	11,658	4.1%	10,931	3.8%	-727	-0.3%
\$20,000 - \$24,999	11,652	4.0%	9,127	3.2%	-2,525	-0.9%
\$25,000 - \$29,999	12,047	4.2%	10,886	3.8%	-1,161	-0.4%
\$30,000 - \$34,999	13,886	4.8%	11,856	4.1%	-2,030	-0.7%
\$35,000 - \$39,999	12,893	4.5%	12,334	4.3%	-560	-0.2%
\$40,000 - \$49,999	25,876	9.0%	23,321	8.1%	-2,555	-0.9%
\$50,000 - \$59,999	20,826	7.2%	23,938	8.3%	3,113	1.1%
\$60,000 - \$74,999	26,442	9.2%	22,933	7.9%	-3,509	-1.2%
\$75,000 - \$99,999	31,788	11.0%	32,390	11.2%	602	0.2%
\$100,000 - \$124,999	22,331	7.8%	22,558	7.8%	227	0.1%
\$125,000 - \$149,999	14,940	5.2%	17,363	6.0%	2,423	0.8%
\$150,000 - \$199,999	16,430	5.7%	19,626	6.8%	3,196	1.1%
\$200,000 - \$249,999	7,204	2.5%	9,567	3.3%	2,362	0.8%
\$250,000+	17,533	6.1%	21,523	7.5%	3,990	1.4%
<hr/>						
<b>Aggregate HH Income (\$M)</b>	<b>\$28,713.0</b>		<b>\$34,618.5</b>		<b>\$5,905.4</b>	
<b>Average HH Income</b>	<b>\$99,761</b>		<b>\$120,006</b>		<b>\$20,245</b>	
<b>Median HH Income</b>	<b>\$63,503</b>		<b>\$70,558</b>		<b>\$7,055</b>	
<hr/>						
<b>Disposable Income</b>						
< \$10,000	33,402	11.6%	31,707	11.0%	-1,695	-0.6%
\$10,000 - \$14,999	10,496	3.6%	9,861	3.4%	-634	-0.2%
\$15,000 - \$19,999	13,144	4.6%	11,902	4.1%	-1,241	-0.4%
\$20,000 - \$24,999	14,530	5.0%	12,078	4.2%	-2,452	-0.9%
\$25,000 - \$29,999	16,742	5.8%	14,554	5.0%	-2,188	-0.8%
\$30,000 - \$34,999	16,360	5.7%	15,329	5.3%	-1,031	-0.4%
\$35,000 - \$39,999	17,079	5.9%	15,352	5.3%	-1,727	-0.6%
\$40,000 - \$49,999	30,182	10.5%	32,272	11.2%	2,090	0.7%
\$50,000 - \$59,999	24,398	8.5%	21,220	7.4%	-3,179	-1.1%
\$60,000 - \$74,999	29,899	10.4%	30,186	10.5%	287	0.1%
\$75,000 - \$99,999	28,738	10.0%	29,496	10.2%	758	0.2%
\$100,000 - \$124,999	16,900	5.9%	19,824	6.9%	2,924	1.0%
\$125,000 - \$149,999	10,549	3.7%	12,770	4.4%	2,221	0.8%
\$150,000 - \$199,999	9,585	3.3%	12,662	4.4%	3,077	1.1%
\$200,000 - \$249,999	4,287	1.5%	5,481	1.9%	1,194	0.4%
\$250,000+	11,523	4.0%	13,776	4.8%	2,253	0.8%
<hr/>						
<b>Aggregate Disposable Income (\$M)</b>	<b>\$23,584.9</b>		<b>\$27,925.8</b>		<b>\$4,340.9</b>	
<b>Average Disposable Income</b>	<b>\$81,944</b>		<b>\$96,806</b>		<b>\$14,862</b>	
<b>Median Disposable Income</b>	<b>\$51,903</b>		<b>\$57,164</b>		<b>\$5,261</b>	

# Demographic Summary: 2010

SCAN/US SAMPLE REPORTS 2010

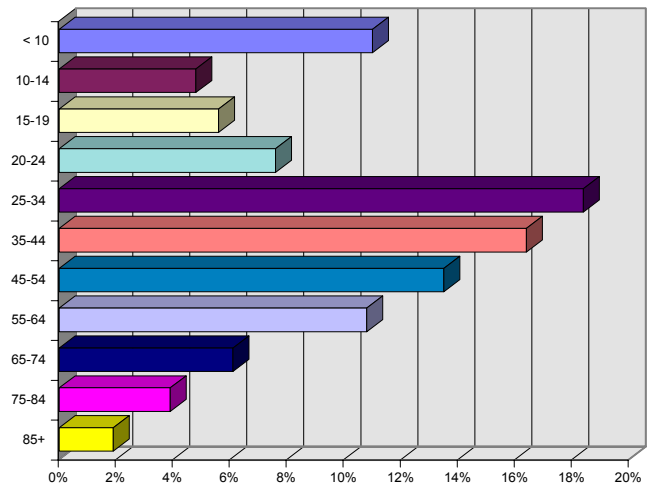
1600 PENNSYLVANIA AVE NW: WASHINGTON,DC 20502/5 Mi Ring

Scan/US, Inc.

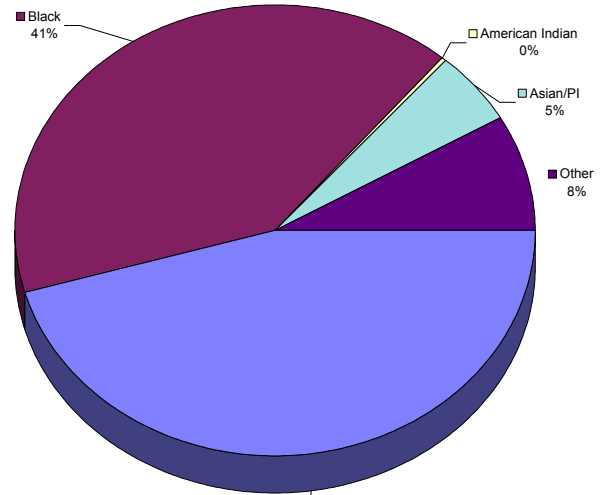
05/12/2009

<b>Population</b>	<b>670,816</b>	
In Group Quarters	37,019	5.5%
<b>Race:</b> White	305,043	45.5%
Black	273,326	40.7%
American Indian	1,957	0.3%
Asian	34,068	5.1%
Pacific Islander	684	0.1%
Other/Multi-Racial	55,737	8.3%
<b>Hispanic Origin</b>	<b>77,762</b>	<b>11.6%</b>
<b>Sex:</b> Male	323,713	48.3%
Female	347,097	51.7%
<b>Age:</b> < 10 Years	74,007	11.0%
10 - 14 Years	32,035	4.8%
15 - 19 Years	37,514	5.6%
20 - 24 Years	50,781	7.6%
25 - 34 Years	123,734	18.4%
35 - 44 Years	110,213	16.4%
45 - 54 Years	90,351	13.5%
55 - 64 Years	72,284	10.8%
65 - 74 Years	41,138	6.1%
75 - 84 Years	25,871	3.9%
85+ Years	12,880	1.9%
<b>Median Age</b>	<b>37.0</b>	
<b>Households</b>	<b>287,817</b>	
Average Household Size	2.2	
<b>Family Households</b>	117,920	41.0%
Average Family Size	3.5	
<b>Non-Family Households</b>	169,897	59.0%
Average Non-Fam HH Size	1.3	
<b>Households by Income</b>		
\$0 - \$24,999	65,617	22.8%
\$25,000 - \$49,999	64,703	22.5%
\$50,000 - \$74,999	47,267	16.4%
\$75,000 - \$99,999	31,788	11.0%
\$100,000 +	78,438	27.3%
<b>Average HH Income</b>	<b>\$99,761</b>	
<b>Median HH Income</b>	<b>\$63,503</b>	
<b>Per Capita Income</b>	<b>\$44,413</b>	
<b>Vehicles Available</b>	<b>296,500</b>	
Average Vehicles/HH	1.0	
<b>Total Housing Units</b>	<b>325,988</b>	
Owner Occupied	137,890	42.3%
Renter Occupied	149,927	46.0%
Vacant	38,171	11.7%

Age



Race



Income

